

# 2023/24 Further Education & Work-Based Learning

**NORTHERN**  
Regional College

### Disclaimer

Whilst the College makes every effort to ensure the accuracy of this publication, it reserves the right to alter, add or remove any of the courses, or parts thereof, or any other matters of information referred to in this guide or any other literature, without prior notice.

Please note that the College's website is the most up-to-date source of information regarding courses and fees and we strongly recommend that you always visit the website before making any commitments.

All courses are subject to minimum enrolment numbers.

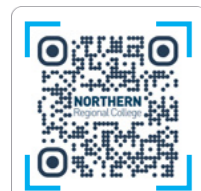
### Equality Opportunity

If you require this document in an alternative format please contact [equality@nrc.ac.uk](mailto:equality@nrc.ac.uk)

Northern Regional College is committed to the promotion of equality of opportunity in all of its activities. We aim to ensure that we provide a supportive, fair, inclusive and welcoming environment for all staff, students and visitors free from any form of discrimination or harassment.



ApprenticeshipsNI is part-funded through the Northern Ireland European Social Fund Programme 2014 – 2020 and the Department for the Economy.



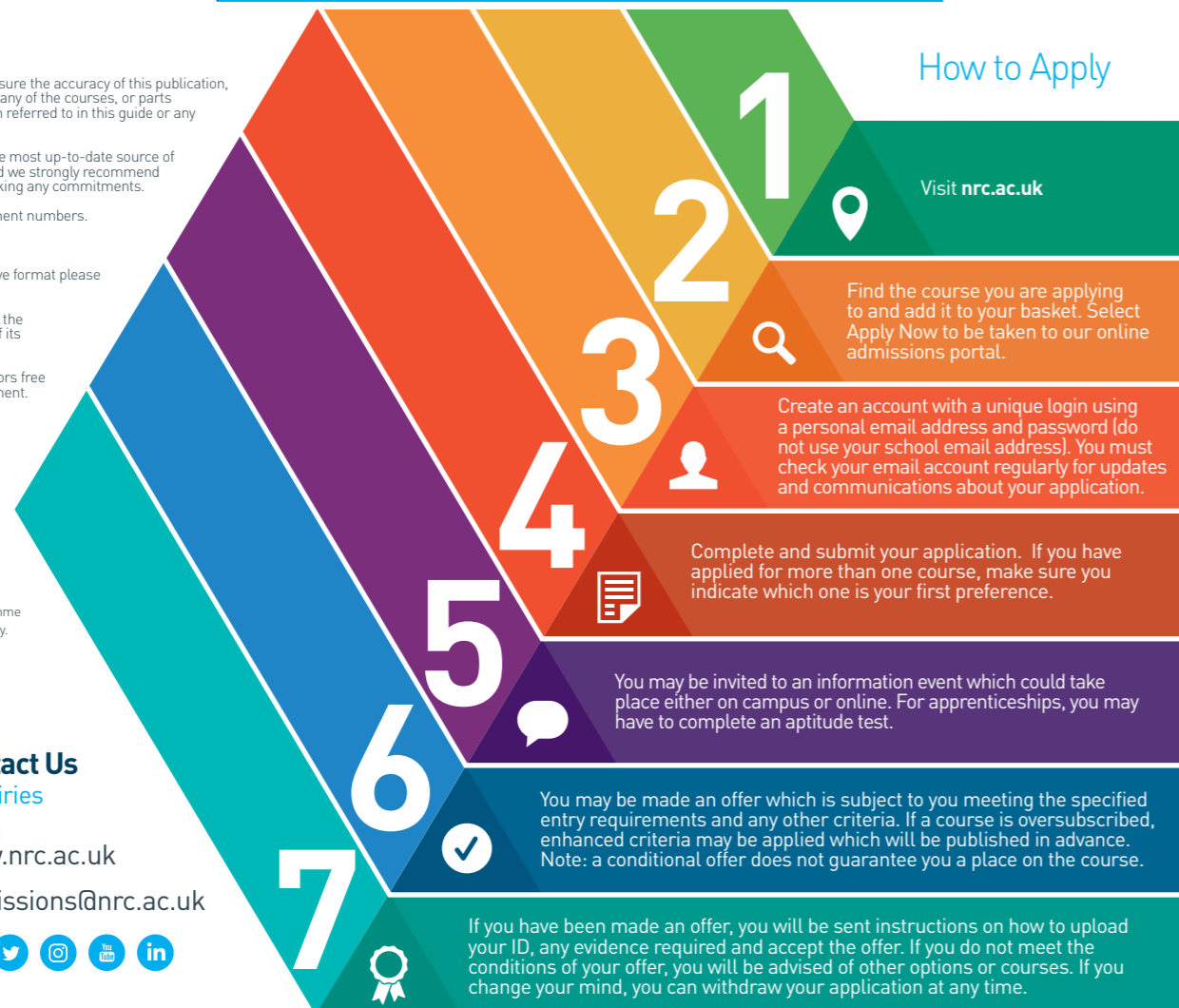
### Contact Us Enquiries

Website:  
[www.nrc.ac.uk](http://www.nrc.ac.uk)

Email:  
[admissions@nrc.ac.uk](mailto:admissions@nrc.ac.uk)



Scan me!



## How to Apply

## Study at Northern Regional College

At Northern Regional College you can shape the direction of your education and career. Our range of qualifications and wide selection of subject areas gives you choice in your learning. Whether you want to work towards a trade or progress to university you will find a course for your needs.

We offer Traineeships/Apprenticeships/GCSE equivalent courses (Level 2 BTEC Diploma), A Level equivalent courses (Level 3 BTEC Extended Diploma) and Access to University courses.

**Excellent quality of teaching and learning**  
Many of our lecturers continue to work as industry professionals and offer extensive knowledge and experience of their specialist area.

**Practical work-based structure**  
All courses are designed to provide you with the skills required to meet the needs of employers.

**Financial support**  
Depending on your course of study you may be eligible for a travel pass or other financial support such as EMA (Education Maintenance Allowance),

Further Education Grants, Access to Learning Fund, hardship payments, childcare assistance. Student Finance staff are available to advise you on other types of financial support you could access while at the College.

See website or contact [studentfinance@nrc.ac.uk](mailto:studentfinance@nrc.ac.uk) for further details.

**Modern equipment and facilities**  
All subject areas are delivered with the latest equipment and facilities to meet industry standards.

**Progression**  
Our courses offer excellent progression routes. Qualifications are available from Level 1 through to Level 6 (Higher Education), all within the College. You can move onto more advanced qualifications in the same subject or into new areas.

**Excellent industry links**  
The College has excellent links with local, national and international employers who provide students with valuable placement opportunities, guest lectures and site visits.

## Supporting Students

### Careers Advice and Guidance

Our team of Careers Advisers provide a professional, impartial and confidential advice and guidance service. We help you make informed careers choices and support you as you progress through your learning, training and work opportunities.

[careers@nrc.ac.uk](mailto:careers@nrc.ac.uk)

### Education Support

We offer comprehensive education support tailored to your specific needs in order to ensure you have the support to attend College and to succeed on your course. If you are unsure about the support we can offer, we can offer transition visits prior to starting your course which will provide a personal review of your needs.

[educationsupport@nrc.ac.uk](mailto:educationsupport@nrc.ac.uk)

### Counselling Services

Beginning a new course can be a stressful time. There may be occasions where you may need to speak to someone outside of your course about issues affecting you. Our College counselling service is available 24 hours per day, 365 days per year and is staffed by professionally trained counsellors who you can talk to on the phone or in person. Group counselling is also available.

### Autism Friendly College

We are proud to be an Autism Friendly College! If you are considering studying at the College, you can contact the Education Support Co-ordinators before making the decision on your next step. We offer bespoke orientation visits where we will tell you about the support we offer, give you a tour of the areas you are interested in and meet with some relevant staff to answer any queries you may have ahead of coming to College.



## Types of Qualifications

Level	Example Qualifications	Typical Entry Requirement*	Equivalent To
Entry 0	Entry Level Awards, Certificates and Diplomas	No entry requirement	Below GCSE level
Level 1	NVQs, Awards, Certificates and Diplomas	Three GCSEs at Grade E above, or equivalent	GCSE grades D-G
Level 2	NVQs, BTEC Awards, Certificates and Diplomas, Traineeships, Apprenticeships, GCSEs	Four GCSEs at Grade D-G above, or equivalent	GCSE grades A*-C
Level 3	Apprenticeships, Subsidiary Diplomas, Foundation Diploma, National Foundation Diploma, Extended Diploma, National Extended Diploma, Advanced Technical Awards, Access to Higher Education	Four GCSEs at Grade C above, or equivalent	A Levels

\*This may vary for some courses. Check each course online for specific entry requirements.

Course	Qualification Type/Level	Ballymena (Farm Lodge)	Ballymena (Lamont Building)	Ballymena (Trostan Avenue)	Ballymoney	Coleraine	Magherafelt	Newtownabbey	Duration (Years)
<b>A</b>									
Access Diploma in Social Sciences (validated by Ulster University)	Level 3			✓		✓	✓	✓	1
<b>NEW</b> Ambulance Emergency and Urgent Care Support (subject to approval)	Level 3 Diploma							✓	1
Animal Care	Level 2 Diploma				✓			✓	1
Animal Management	Level 3 Extended/National Extended Diploma				✓			✓	2
Applied Science	Level 2							✓	1
Applied Science (Biomedical Science)	Level 3 Extended Diploma			✓		✓			2
Applied Science (Analytical and Forensic Science)	Level 3 Extended Diploma							✓	2
Art and Design Practice	Level 3 National Extended Diploma			✓					2
Art and Design Skills for Modern Creative Industries	Level 2 Diploma			✓				✓	1
Aspire2work	Inclusive Learning			✓	✓		✓	✓	1
<b>B</b>									
Barbering	Level 2 NVQ Diploma				✓				1
Barbering	Level 3 NVQ Diploma			✓					1
Beauty Therapy	Level 2 NVQ Diploma			✓	✓		✓	✓	1
Beauty Therapy - Massage	Level 3 NVQ Diploma			✓	✓		✓	✓	1
Brickwork	Level 2 Traineeship	✓							2
Brickwork	Level 2/3 Apprenticeship	✓							2
Business	Level 3 National Extended Diploma			✓		✓	✓	✓	2
Business	Level 2							✓	1
<b>C</b>									
Carpentry & Joinery	Level 2 Traineeship	✓			✓		✓	✓	2
Carpentry & Joinery	Level 2 Apprenticeship	✓			✓		✓	✓	2
Carpentry & Joinery (Bench) or (Site)	Level 3 Apprenticeship	✓			✓		✓	✓	2
Catering	Level 2 Traineeship			✓	✓				1-2
Catering	Level 2 Apprenticeship			✓	✓				3
<b>NEW</b> Childcare	Level 2 Traineeship			✓	✓			✓	1
Children's Care, Learning and Development	Level 3 Diploma (CACHE)			✓	✓		✓	✓	1
Children's Care, Learning and Development	Level 3 Extended Diploma (CACHE)			✓	✓		✓	✓	1
Civil Engineering	Level 3 Apprenticeship						✓		2
Computing/IT	Level 2 Traineeship	✓				✓	✓	✓	1
Computing/IT	Level 3 Extended Diploma	✓				✓	✓	✓	2

Course	Qualification Type/Level	Ballymena (Farm Lodge)	Ballymena (Lamont Building)	Ballymena (Trostan Avenue)	Ballymoney	Coleraine	Magherafelt	Newtownabbey	Duration (Years)
<b>E</b>									
Construction and the Built Environment	Level 3 National Extended Diploma	✓			✓		✓		2
Creative Media Practice	Level 3 National Extended Diploma			✓			✓		2
Creative Media Practice (Animation)	Level 3 National Extended Diploma					✓		✓	2
<b>NEW</b> Creative Media Practice (Digital Design and Marketing)	Level 3 National Extended Diploma					✓			2
<b>NEW</b> Creative Media Practice (Digital Games Development)	Level 3 National Extended Diploma							✓	2
Creative Media Practice (Digital Games Development and Virtual Reality)	Level 3 National Extended Diploma					✓			2
Creative Media Practice (Interactive Media)	Level 3 National Extended Diploma							✓	2
Creative Media Practice (TV & Film)	Level 3 National Extended Diploma					✓			2
Creative Media Skills	Level 2 Diploma			✓		✓		✓	1
<b>E</b>									
Electrical Installation	Level 3 Apprenticeship	✓						✓	4
Engineering	Level 3 National Extended Diploma	✓				✓	✓	✓	2
Engineering	Level 2 Traineeship	✓				✓	✓	✓	2
Engineering	Level 2 Apprenticeship	✓					✓	✓	2
Engineering	Level 3 Apprenticeship	✓					✓	✓	2
<b>H</b>									
<b>NEW</b> Hairdressing	Level 2 Traineeship			✓	✓		✓	✓	1
<b>NEW</b> Hairdressing	Level 2/3 Apprenticeship			✓				✓	2
Hairdressing	Level 3 NVQ Diploma			✓			✓	✓	1
<b>NEW</b> Health and Social Care	Level 2 Traineeship			✓		✓	✓	✓	1
<b>NEW</b> Health and Social Care	Level 3 Diploma						✓	✓	1
Health and Social Care	Level 3 National Extended Diploma			✓		✓	✓	✓	2
Hospitality and Tourism Team Member	Level 2 Traineeship			✓	✓				2
<b>I</b>									
<b>NEW</b> Introduction to Youth Work & Early Years				✓	✓		✓	✓	1
<b>M</b>									
Motor Cycle Maintenance and Repair Competence	Level 3 Apprenticeship	✓							3
Motor Vehicle	Level 2 Traineeship	✓			✓		✓	✓	2
Motor Vehicle	Level 2/3 Apprenticeship	✓						✓	2
<b>N</b>									
<b>NEW</b> Nail Technology with Entrepreneurship	Level 3			✓					1

Course	Qualification Type/Level	Ballymena (Farm Lodge)	Ballymena (Lamont Building)	Ballymena (Trostan Avenue)	Ballymoney	Coleraine	Magherafelt	Newtownabbey	Duration (Years)
<b>P</b>									
Performing Arts	Level 2							✓	1
Performing Arts (Music Technology)	Level 3 Cambridge Technical Extended Diploma						✓		2
Performing Arts Practice	Level 3 National Extended Diploma					✓		✓	2
<b>NEW</b> Physical Activity, Fitness and Exercise Science	Level 3 Diploma							✓	2
Plumbing	Level 2 Traineeship			✓				✓	2
Plumbing	Level 2/3 Apprenticeship			✓				✓	3
<b>NEW</b> Principles and Practice for Pharmacy Technicians	Level 3 Diploma							✓	2
Professional Cookery (Preparation and Cooking)	Level 3 NVQ Diploma			✓					1
Public Services (Uniformed Protective Services)	Level 3 National Extended Diploma	✓				✓		✓	2
<b>R</b>									
<b>NEW</b> Retail and Enterprise	Level 2				✓				1
<b>NEW</b> Route2Work	Inclusive Learning			✓	✓		✓	✓	1
<b>S</b>									
Specialist Support For Teaching And Learning In Schools	Level 3 Diploma							✓	1
Sport	Level 2					✓			1
Sports Coaching and Development (Ballymena Utd Football Academy)	Level 3 National Extended Diploma		✓						2
Sports Coaching and Development (optional Irish FA specialism)	Level 3 National Extended Diploma		✓			✓		✓	2
Sport and Exercise Science	Level 3 National Extended Diploma					✓			2
<b>T</b>									
<b>NEW</b> Transition2College	Inclusive Learning			✓	✓		✓	✓	2
<b>NEW</b> Transition2Work	Inclusive Learning						✓	✓	1
Travel and Tourism	Level 2 Traineeship					✓		✓	1
Travel and Tourism with WorldHost and Tour Guiding	Level 3 National Extended Diploma					✓			2
Travel and Tourism with Aviation and Cruise	Level 3 National Extended Diploma						✓		2
Travel and Tourism with Aviation and Events Management	Level 3 National Extended Diploma							✓	2
<b>W</b>									
Work Ready	Inclusive Learning			✓	✓		✓	✓	1
<b>Y</b>									
<b>NEW</b> Youth Work	Level 1			✓	✓		✓	✓	1
<b>NEW</b> Youth Work and Employability Skills	Level 2			✓				✓	1

Please note that due to ongoing major campus construction projects, courses at Ballymena, Coleraine and Ballymoney may be relocated as required.